

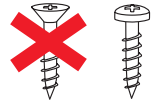


Wichtig! Bitte mit der Pflegeanleitung aufbewahren!
Important! Please keep together with care instructions!
Let op! Bewaren samen met de onderhoudsinstructies!
Important! Conserver ensemble avec les conseils d'entretien!
Importante! Conservare con le istruzioni per la manutenzione!
Ważne! Proszę się dokładnie trzymać instrukcji!

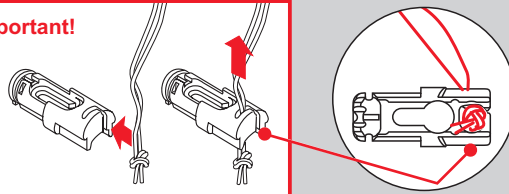
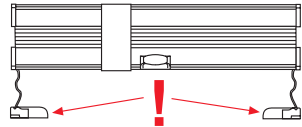
Cosiflor DF 10/30

Falzmontage, Top fixing, Bevestiging in de sponning,
 Dans la feuillure, Montaż wnękowy.

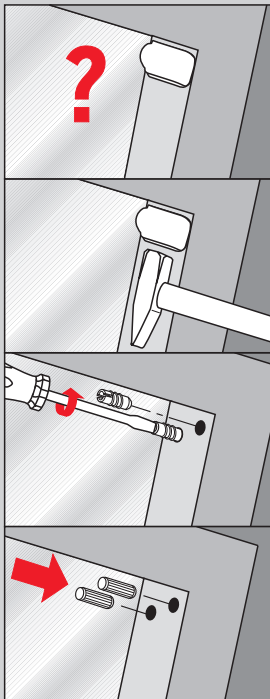
Bitte nur beiliegende Schrauben verwenden.
 Please use enclosed screws only.
 Gelieve enkel bijgevoegde schroeven te gebruiken.
 Se servir exclusivement des vis jointes.
 Si prega di utilizzare solo le viti allegate.
 Proszę użyć tylko załączonych śrubek



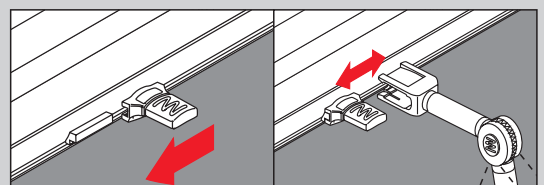
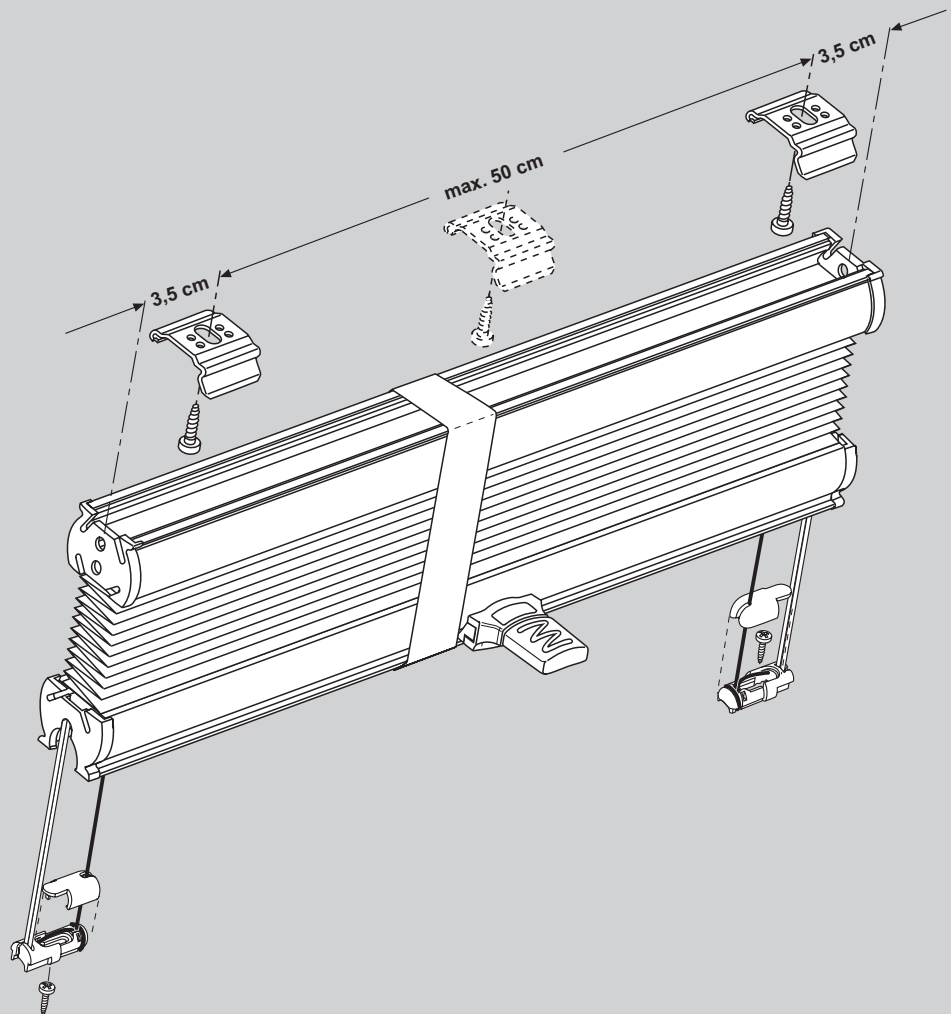
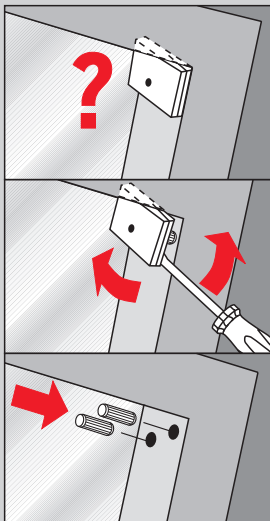
Wichtig! • Important! • Let op! • Important!
Importante! • Ważne!



VELUX
 Vorbereitung • Preparation
 Voorbereiding • Préparazion
 Preparazione • Przygotowanie



VELUX
 Vorbereitung • Preparation
 Voorbereiding • Préparazion
 Preparazione • Przygotowanie



Montage der Anlage bündig mit der Fenstervorderkante.

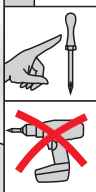
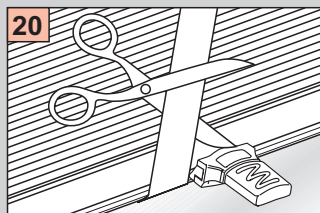
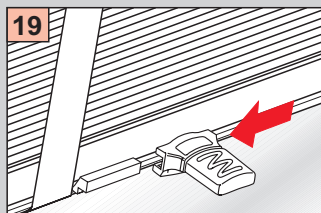
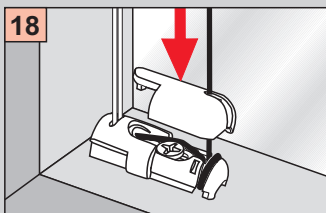
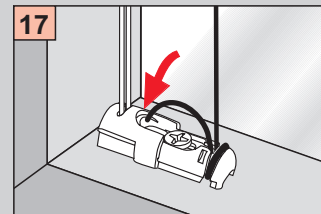
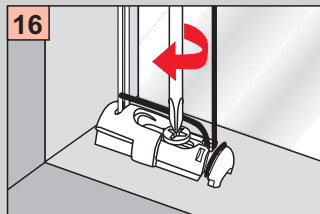
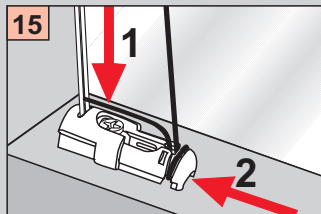
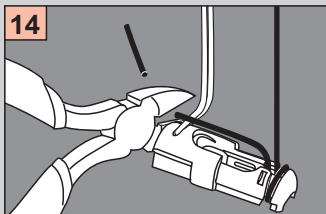
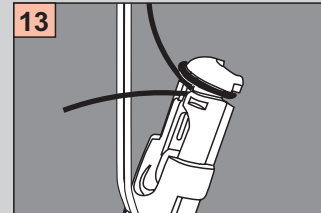
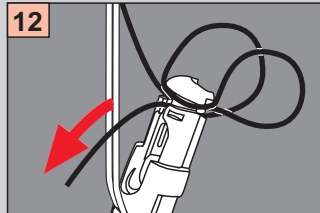
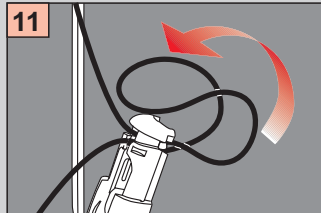
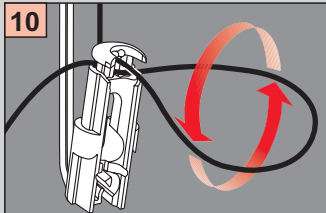
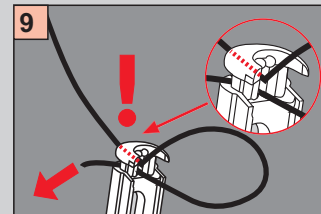
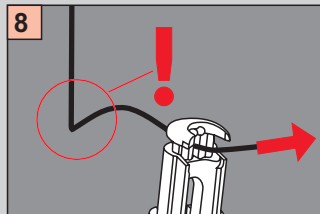
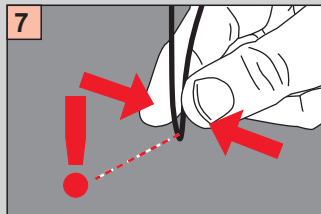
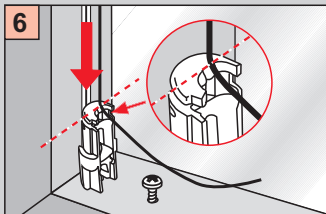
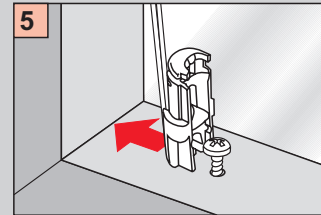
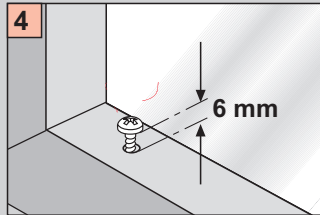
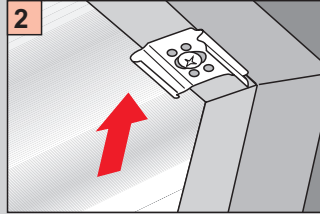
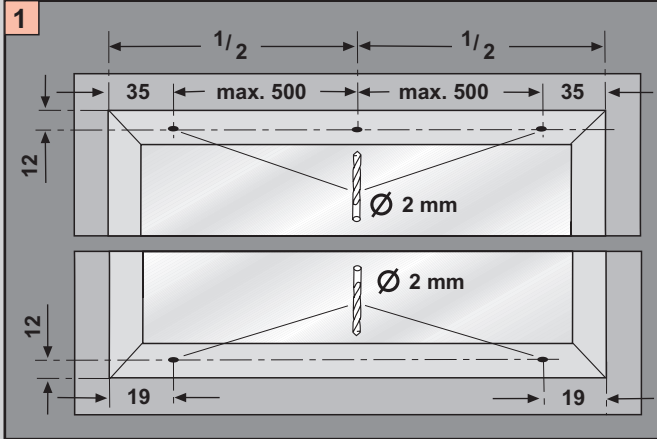
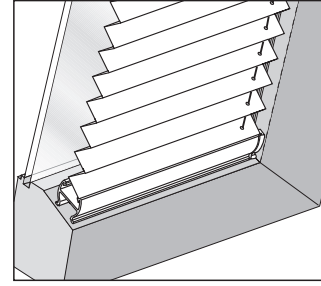
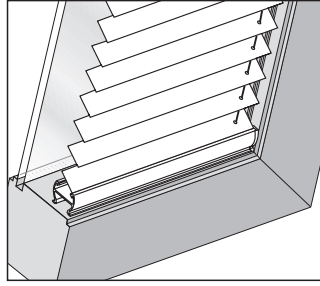
The system must be installed flush with the front edge of the window.

Montage van de plissé precies aan de voorkant van de glaslijst.

Montage de l'installation a fleur avec l'arete avant de la fenetre.

Montaggio dell'impianto a paro con il bordo anteriore della finestra.

Montaż osprzętu równo z przednim katem od okna



Demontage • Disassembly • Demontage • Démontage • Smontaggio • Demontaž

